

FANATEC®

PORSCHE
911 GT2
WHEEL



Porsche 911 GT2 Wheel Manual

FANATEC®

PORSCHE
911 GT2
WHEEL



Thank you for choosing Fanatec!

Before using this product read this manual for important safety and health information.
Keep all manuals for future reference.

INDEX

1. General
2. Whats in the box
3. Compatibility
4. Description of buttons and accessories
 - 4.1 Buttons
 - 4.2 Pedals
 - 4.3 Shifters
 - 4.4 Cables
5. Installation
 - 5.1 Installation of shifters
 - 5.2 Table Installation
 - 5.3 Simulator installation
 - 5.4 Installation of pedals
 - 5.5 Electrical Connection
6. „Getting started“
 - 6.1 Select Platform mode
 - 6.2 Tuning
 - 6.3 Calibration
7. Summary: Modes and button combinations
8. Cleaning the wheel
9. Troubleshooting
10. Technical Support / FAQ
11. Manufacturer
12. Trademarks
13. Warranty

! WARNING

Before using this product, read this manual for important safety and health information. Keep all manuals for future reference.

For replacement manuals, go to www.fanatec.com

1. GENERAL

! WARNING: Photosensitive Seizures

A very small percentage of people may experience a seizure when exposed to certain visual images, including flashing lights or patterns that may appear in video games. Even people who have no history of seizures or epilepsy may have an undiagnosed condition that can cause these „photosensitive epileptic seizures“ while watching video games. These seizures may have a variety of symptoms, including light-headedness, altered vision, eye or face twitching, jerking or shaking of arms or legs, disorientation, confusion, or momentary loss of awareness. Seizures may also cause loss of consciousness or convulsions that can lead to injury from falling down or striking nearby objects. Immediately stop playing and consult a doctor if you experience any of these symptoms. Parents should watch for or ask their children about the

above symptoms – children and teenagers are more likely than adults to experience these seizures. The risk of photosensitive epileptic seizures may be reduced by taking the following precautions:

- Sit farther from the TV screen.
- Use a smaller TV screen.
- Play in a well-lit room.
- Do not play when you are drowsy or fatigued.

If you or any of your relatives have a history of seizures or epilepsy, consult a doctor before playing.

! WARNING: Musculoskeletal disorders

Use of game controllers, keyboards, mice, or other electronic input devices may be linked to serious injuries or disorders. When playing video games, as with many activities, you may experience occasional discomfort in your hands, arms, shoulders, neck, or other parts of your body. However, if you experience symptoms such as persistent or recurring discomfort, pain, throbbing, aching, tingling, numbness, burning sensation, or stiffness, **DO NOT IGNORE THESE WARNING SIGNS. PROMPTLY SEE A QUALIFIED HEALTH PROFESSIONAL**, even if symptoms

occur when you are not playing a video game. Symptoms such as these can be associated with painful and sometimes permanently disabling injuries or disorders of the nerves, muscles, tendons, blood vessels, and other parts of the body. These musculoskeletal disorders (MSDs) include carpal tunnel syndrome, tendonitis, tenosynovitis, vibration syndromes, and other conditions.

While researchers are not yet able to answer many questions about MSDs, there is general agreement that many factors may be linked to their occurrence, including medical and physical conditions, stress and how one copes with it, overall health, and how a person positions and uses their body during work and other activities (including playing a video game). Some studies suggest that the amount of time a person performs an activity may also be a factor. If you have questions about how your own lifestyle, activities, or medical or physical condition may be related to MSDs, see a qualified health professional.

Attention!

- The device must not be exposed to rain or humidity in order to avoid risk of fire and the danger of electric shock.
- Operating temperature: 0°C – 40°C.
- The maximum operation time of the wheel with continuous Force feedback activity is 1 hour. Let the wheel cool down for a few minutes before you continue.

- Long playing may cause health risks. Take a break of 5 minutes every 20 minutes, and do not play for more than 2 hours per day.

- We strongly advise you to not drive a vehicle immediately after using a video game.

- Utilisation of the vibration and Force Feedback function may cause damage to your health.

- In case of interferences with other wireless 2.4 GHz devices, the interfering devices must be removed or switched off.

- Not intended for children under the age of 3 years.

- Contains small pieces. Danger of swallowing!

- Do not open the casing of the device.

- The device only contains components that cannot be repaired by the user and opening will void the warranty.

⚠ WARNING: Electrical Safety

As with many other electrical devices, failure to take the following precautions can result in serious injury or death from electric shock or fire or damage to the racing wheel. If you use AC power, select an appropriate power source:

- Use only the power supply and AC power cord that came with your racing wheel or that you received from an authorized repair center.
- Do not use non-standard power sources, such as generators or inverters, even if the voltage and frequency appear acceptable. Only use AC power provided by a standard wall outlet.

To avoid damaging the AC power cord:

- Protect the cord from being pinched or sharply bent, particularly where it connects to the power outlet and the racing wheel.
- Do not jerk, knot, sharply bend, or otherwise abuse the power cord.
- Do not expose the power cord to sources of heat.
- When disconnecting the power cord or power supply, pull on the plug - do not pull on the cord.
- If the power cord becomes damaged in any way, stop using it immediately and contact Fanatec Customer

Support for a replacement.

- Unplug your racing wheel's power cord during storms or when unused for long periods of time.

2. What's in the Box

Your Fanatec Porsche 911 GT2 wheel comes with:

- Fanatec Porsche 911 GT2 Steering Wheel
- ClubSport shifter paddles aluminum
- Adapter cable to connect Logitech G25 /G27 pedals
- Quickguide
- Power supply

Optional

- ClubSport Shifter Paddles Carbon
- ClubSport Pedals
- ClubSport Pedal Tuning kit
- ClubSport Pedal Colour Kit
- Shifter set (6+1 H and Seq)
- ClubSport table clamp
- RennSport Wheel Stand
- RennSport Cockpit

3. Compatability

Microsoft Xbox 360

The GT2 wheel can be used with all games which support (Force Feedback) racing wheels. Only new games (eg. Forza Motorsport 3) will use extended features like 900° mode, clutch, 7GS shifter etc.

PC

This wheel can be used with any computer that meets minimum system requirements:

- Windows XP (SP2)
- Windows Vista (32-Bit/64-Bit)
- Windows 7 (32-Bit/64-Bit)
- 20 MB of Harddisk space
- Free USB 1.1 or higher port
- Direct X9.0 or higher

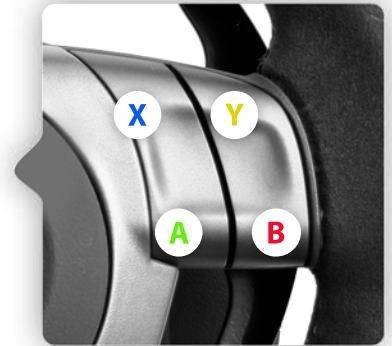
The game must support Direct X Force Feedback functionality.

Sony PlayStation 3

Only racing games which support the Porsche wheel will use the full functionality of the wheel. To ensure increased compatibility you can switch to Playstation 3 mode which makes the Porsche wheel compatible to games which only support other Force Feedback wheels. Please note that we cannot guarantee the full functionality for features like the 900° rotation, the clutch or the 6-speed gear stick in this mode.

4. Description of buttons and accessories

4.1 XBox 360 button layout



IMPORTANT: This button naming will be used to explain all button combinations!



4. Description of buttons and accessories

4.2 PlayStation 3 button layout



4. Description of buttons and accessories

4.2 Pedals (optional)



4. Description of buttons and accessories

4.1 Button layout

Shifter Paddles

Tuning Button

Right Bumper R1

Left Bumper L1

Xbox Guide Button



4. Description of buttons and accessories

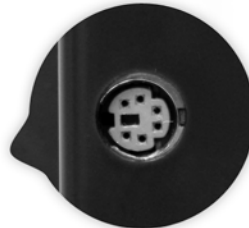
4.3 Shifter



Seq gear stick



6-speed gear stick plus reverse



PS/2 Slot



4. Description of buttons and accessories

4.3 Cables



Power Supply (DE)



Power Supply (US)



G25/G27 pedal adapter



UK adapter (EU version only)



110V-220V Power supply for wheel

5. Installation

5.1 Shifter

1. Make sure that the tube fixation screws are loose. Use a coin and **not** a screwdriver.



2. Insert the metal tubes into the base from the left or right side. The tube has to be fully inserted until it comes out of the base on the other side.

3. To build up some counterforce use a flat underground and place the wheel vertical on the tubes. Then push the wheel down with soft pressure.



4. Tighten the tube fixation screws with a coin.
5. Choose either the sequential or the 6-speed gear stick and attach it to the tubes.

5. Installation

5.1 Shifter

1. Put the wheel on the side to build up some counterforce and press the gear stick on the tubes from above until you see the metal tubes coming out on the other side of the gear stick channels.



7. Connect the gear stick connection cable with the base and the gear stick.



Please note that you can mount the shifter on both sides but only one gear stick can be active at the same time.

5. Installation

5.2 Table Installation

1. Open the table clamp fixation screw.



2. Pull out the table clamp a little bit (5 cm).



3. Mount the wheel to the table and then push in the table clamp as much as possible. Please note that the quick release clamps must be unfastened, and then tighten the table clamp screw.



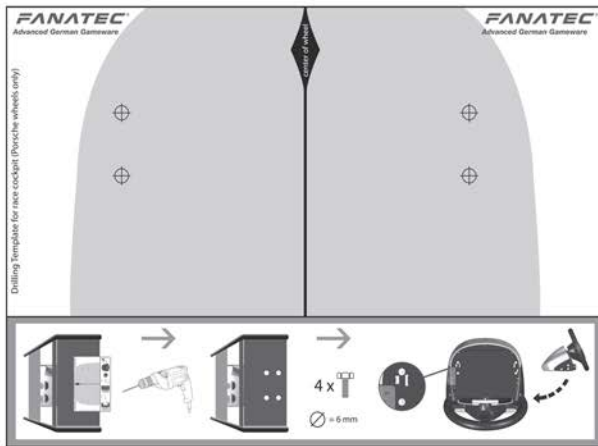
5. Fasten the quick release clamps.



5. Installation

5.3 Simulator installation

If you prefer a permanent installation on a table or simulator you can fix the wheel with 4 screws to any flat surface. Please use the drilling template to drill the holes. The length of the screws depends on your table so we did not include any screws but you can use standard metric screws with a diameter of 6 mm.



IMPORTANT:

Please only tighten the screws very gently to avoid damaging the wheel.

5.4 Installation of pedals

In combination with the PWC you can use the Porsche Wheel Standard Pedals, the ClubSport Pedals, the G25 pedals (using adapter).



Connect the pedals with the PS/2 cable to the green socket on the right side of the wheel.



If you use the ClubSport Pedals you can also connect them directly to the PC as a separate USB controller.

IMPORTANT:

Use only one connection cable for the ClubSport pedals and use the USB cable only for PC.

5. Installation

5.5 Xbox Headset Install

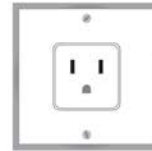
Turn down the volume by rotating the volume control all the way to the left. Insert the 2.5 mm headset connector into the female connector on the Left side of your PWGT2.



5. Installation

5.5 Electrical connection

Please plug-in the power supply to the right side of the base.



6. Getting started

After pressing the power switch it automatically self calibrates with a full rotation to the right side and back to the center. Please keep your hands off the wheel during calibration and do not press any pedals. The wheel display shows “- - -” and waits in Standby Mode. Now you can select on of the three separate platform modes which ensure best functionality on Xbox 360, PC and Playstation 3.

Please note that if you use the wheel for the first time you might need to bind the RF dongle to the wheel or calibrate the shifter (7GS). Please see instructions below how to do this.

6.1 Select platform mode

Xbox 360 Mode

The Porsche Wheel 911 GT2 communicates wireless with the Xbox 360 and does not need any cable or dongle.

1. Power on both devices.
2. After self calibration press and hold Xbox 360 Guide Button for one second or press and hold Start Button for one second.
3. The Wheel button illumination shows Xbox 360 symbols. Xbox 360 and PWGT2 are connected.

If you use the wheel for the first time, the PWTS must be connected to the Xbox 360 like any other wireless controller.



- 1.) Press Connect Button on your console
ring of light starts blinking
- 2.) Press and hold Connect Button on wheel about one second
ring of light on wheel stops blinking and shows the same illuminated segment
- 3.) PWGT2 and console are connected

6. Getting started

PC Mode

1. Installation of drivers

For PC use, you need to install the driver before you plug in the USB cable. The driver requires less than 10 MB of space on your hard disk and is compatible to Windows XP (SP2) and Windows Vista (32-Bit/64-Bit) as well as Windows 7 (32-Bit/64-Bit).

Please check www.FANATEC.com/support for the latest updates on the driver.

2. Connect the USB cable to a free USB slot of your PC and to the connector on the left side of the wheel.

3. Power on the wheel.

4. After self calibration press the Back Button and hold it for one second. There will be no wheel button illumination.

5. PC and PWGT2 are connected.

Driver

To open the driver dialog you have to go to the control panel, double click „Game Controllers“ and choose the properties of „Porsche Wheel“. In this window you can change several settings of the wheel and test if all buttons are working fine.

PS3 Mode

1. Connect the USB cable to a free USB slot of your PlayStation and to the connector on the left side of the wheel.

2. After the self calibration enter the PC mode by pressing Back Button for one second. There will be no wheel button illumination.

3. Press Connect Button + Back Button simultaneously. Wheel button illumination shows PlayStation symbols

4. Playstation 3 and PWGT2 are connected.

IMPORTANT:

Please note that on some Playstation 3 games it is required to use the SIXAXIS controller for Navigation in the games menu.

After starting a game, the wheel could return to PC mode – re-enter PS3 mode.

6.2 Tuning

With the TUNING feature you can fine tune the wheel settings independent from the game or platform even during gameplay directly on the wheel. You can adjust the strength of the Force Feedback and vibration motors as well as setting the best sensitivity for your favourite game. Additionally you can enable the Drift Mode, the ABS vibration feature and permanently save 5 settings in the memory of the wheel.

Tuning Button



6.2 Tuning

To navigate in the menu:

1. Press the Tuning Button.
2. The currently active set-up will appear, indicated by S_1 to S_5. You can save up to five set-ups in the controller.
3. Select set-up: **↑** and **↓**
4. Select function: **←** and **→**
5. Change setting of the respective function: **↑** and **↓**
6. Leave tuning mode: Press „TUNING“
The settings will remain.

Sensitivity

The value shows the wheel rotation which is needed for a full rotation in the game. The available values depend on the used platform:

PS3: 90 to 900 in steps of 10 / OFF

If the setting is „OFF“ the sensitivity of the wheel will be controlled by the Game. In case you are not able to choose the sensitivity in a Playstation 3 game, you can force the wheel to a certain sensitivity.



S_1

S_5

Sen

090

100

360

540

900

PC: 90 to 900 in steps of 10 / OFF

If the setting is „OFF“ the sensitivity will be controlled by the driver (recommended)

Force Feedback

In steps of 10 from 0 to 100

Adjust the percentage of the total Force-Feedback strength.

OFF

FF

000

100

Shock Vibration

In steps of 10 from 0 to 100

In the wheel rim are two additional vibration motors which can be controlled by the game if a game supports it. By default the vibration motors are synchronized with the gas pedal to let you feel the vibration of the motor. You can adjust the percentage of the vibration strength you want.

Sho

000

100

Drift Mode

OFF / 1 / 2 / 3

Enable the unique drift mode feature which makes the wheel easier and faster to turn.

dr

001

003

6.2 Tuning

ABS Vibration

In steps of 1 from 0 to 100 / OFF

This feature simulates ABS vibration by activating the vibration motors in the wheel and on the brake pedal of the ClubSport Pedals (optional). You can set a value of brake power from 0-100% that is needed to start the vibration.

Linearity Setting

In steps of 10 from 0 to 100

If you like to have the precision around the center of a large steering angle (e.g. 900°) but the advantage of fast movements of a short angle (e.g.) 180° you can change the linearity of the steering axis. The car will react slowly around the center and make bigger movements the more you turn the wheel.

Dead Zone Setting

In steps of 10 from 0 to 100

For some games you can add a little dead spot where the car does not react to wheel movements in the center in order to avoid shaking.



ABS
052
OFF

Lin
000
050
100

DEA
000
050
100

Spring Setting

In steps of 1 from -3 to +3

This setting changes the spring forces sent from the game and determines how strong the wheel returns to the center. Only noticeable in PS3 mode.

Damper Setting

In steps of 1 from -3 to +3

This changes the dampening effect sent by the games. The damper lets the wheel move slower. The more damper the more resistance you can feel. Only noticeable in PS3 mode.

Note: The Tuning functions depend on the Firmware version of the wheel. You might need to upgrade the firmware of the wheel to see the full functionality but this is only recommended for experienced users.

SPR

DPR

6.3 Calibration

Shifter

If the 6-speed gear stick (7GS) is not working properly it might require new calibration. Please go through the following steps:

1. Power on the wheel
2. Choose any platform mode (PS3/PC)
Make sure your shifter is connected to the wheel!
3. Press „Start Button“ + „TUNING button“ at the same time: The LED display will show **G_n**
4. Bring the 7GS into neutral position and press the „Start Button“
5. Enter reverse gear and press “Start Button”
6. Enter 1st gear and press “Start Button”
7. Enter 2nd gear and press “Start Button”
8. Enter 3rd gear and press “Start Button”
9. Enter 4th gear and press “Start Button”
10. Enter 5th gear and press “Start Button”
11. Enter 6th gear and press “Start Button”



G _ n
G _ r
G _ 1
G _ 2
G _ 3
G _ 4
G _ 5
G _ 6

Wheel Center

1. Bring the wheel into PC mode and turn it to its center position, then press and hold LSB Button and RSB Button at the same time.
3. Press Xbox Guide Button.
4. Release all three buttons.



7. Summary

Modes and button combinations

Choose platform mode

Power on the wheel and wait until self calibration has finished. Display shows “- - -”.

Xbox 360: Press and hold Xbox 360 Guide Button for one second.

PC: Press and hold Back Button for one second.

PS3: Start PC mode. Press Back Button and Connect button simultaneously.

Calibrate wheel center

Start PC mode and then press and hold RSB and LSB simultaneously. Then Press Base Button and release the buttons.

Reset all Tuning Menu setting

Press and hold Tuning Button for ten seconds.

Start 7GS Shifter Calibration

Press Start Button and Tuning Button simultaneously.

8. Cleaning

Racing wheel

Clean only with a dry or slightly damp cloth. Using cleaning solutions may damage your racing wheel.

9. Troubleshooting

The Porsche 911 GT2 Wheel must not be opened or modified. Endor® AG expressly prohibits analysis and utilisation of the electronics, hardware, software and firmware contained in the controller. In case difficulties occur in connection with utilisation of the Porsche 911 GT2, please use the following guide for elimination of errors. On the website you will find further details and contact data.

Malfunctions on Xbox 360

Forza Motorsport 3 does not detect the 900° wheel rotation: Make sure you start the Xbox 360 with the on/off button on the console and not by pressing the Xbox 360 Guide Button on the wheel. Make sure you select 900 for

Malfunctions on Playstation 3

- Game does not recognize the Porsche wheel:
Please switch the wheel to compatibility mode.
- Wheel switches to PC mode after starting a game:
Please enter PS3 mode again.
- Saving the game is not possible:
Please use the SIXAXIS controller to save the game and navigate in the system menu.

Clutch or 6-speed gear shift is not working at all

- Please make sure that your game supports this feature.
- Please check if you have chosen the right settings in the options menu of the game.
- Please make sure that the gear stick cable is connected properly.
- Please make sure that the gear stick is calibrated. If you bought the shifters separately you will have to calibrate the 7GS shifter before you can use it.
- Please test the functionality on the PC if possible.
- In GranTurismo 5: Prologue you need to press the triangle button in the game in order to activate the clutch.

Wheel is not working properly

- Please check if the game is supporting the wheel and if you selected the right settings in the options menu of the game.
- Make sure the latest version of the Porsche wheel driver is installed (PC only)
- Please make sure that the power cable is connected properly. After the power switch is pressed the wheel should automatically self calibrate.

9. Troubleshooting

- In general we highly recommend installing a separate and dedicated PCI USB controller card only for the PWGT2 in order to avoid conflicts with other USB devices and to get maximum performance of your wheel.
- If the wheel is connected by cable and the dongle is plugged to the same or another device, the wheel will use the cable connection.
- Some older PC games don't support enough buttons to make use of all features of the wheel.
- Some racing games are not optimized for racing wheels. Even if they can be played with the PWGT2 they could work better with a gamepad or a keyboard.

Problems with USB headset

Some PC with AMD processor have problems with Force feedback wheels. In such a case please install a USB 2.0 PCI card and use it for the Porsche wheel.

Problems with driver

Please make sure to download the latest version of the driver at www.FANATEC.com/support.

10. Technical Support / FAQ

Technical Support / FAQ: www.Fanatec.com

11. Manufacturer

ENDOR® AG

Seligenthalerstraße 16 A

84034 Landshut

Niederbayern / Germany

Fanatec is a brand of Endor® AG

www.FANATEC.com

12. Trademarks

„Porsche“ and „911“ are registered trademarks of Dr. Inc. h.c. F. Porsche Aktiengesellschaft. Manufactured under licence of Porsche Lizenz- und Handelsgesellschaft mbH.

„PlayStation 2“, „PlayStation 3“ are trademarks of Sony ComputerEntertainment Inc.

„Fanatec“ and „Endor“ are registered trademarks of Endor® AG/Germany.

„Microsoft“, „Xbox 360“, „Xbox Live“ and „Xbox“ are either registered trademarks or trademarks of Microsoft Corp. in the United States and/or other countries.

13. Warranty

Please check the FAQ database at FANATEC.com whether your problem can be already solved there. Normally, the warranty period is two years. However, this may differ depending on the respective state.

1) Endor® AG grants for the hardware product – as extension of shorter national warranty regulations, if applicable – a two-year warranty for material and manufacturing defects. The warranty does not include defects that are due to commercial use of the product and/or normal wear and tear and/or damaging by third parties and/or improper utilisation or treatment and/or utilization of the product contrary + to the operating and maintenance instructions and/or not intended installation and/or non-compliance with the local safety standards and/or the results of an intervention by a third party or a not authorised opening of the device including any measures for modification, adjustment and/or adaptation measures (also in case of professional execution). Warranty applies as of the date of purchase when the final customer purchased the product, and is exclusively limited to the rights as of 2), as far as this does not limit any further legal warranty claims on the basis of various national laws. Warranty is subject to return of the defective product with carriage paid, within the warranty period, including the original re -

ceipt that must include date of purchase as well as the company stamp/company print of the first dealer. 2) The warranty covers – at the choice of Endor® AG – either gratuitous repair or replacement of the device or components of the device. With defects that are not covered by the warranty and/or that are excluded from warranty (see above), possibilities for repair are to be requested with the local customer service or the local dealer. As far as permitted by law, any further liability – with the exception of intent and gross negligence – is excluded for any indirect or direct damages and consequential damages, regardless of whatsoever basis of claim. This applies in particular to damages with other property, damages to persons, data losses as well as financial losses like loss of profit as well as transport damages in connection with returns to Endor® AG. As far as liability limitations are not legally allowed or effective in certain states or certain regions, the limitations are to be effective to such extent that exclusions of liability

FANATEC®

PORSCHE
911 GT2
WHEEL

